



Delta Section

NEWSLETTER



Volume 34 No. 5

January 2018



REGISTER ONLINE:

<http://connect.spe.org/delta/home>

LOCATIONS:

South Shore: Superdome Holiday Inn
330 Loyola Ave
New Orleans, LA 70112

North Shore: Chevron
100 Northpark Blvd
Covington, LA 70433

Computer: Computer Access Only
Attend from your home
or office

Southshore - \$25

Northshore - \$15

Computer Only - \$5

Please remember: All attendants must be pre-registered to attend the North Shore meeting in the Chevron office.

For questions or comments,
please contact:

Howard Duhon

hduhon@gateinc.com

Programs Chairperson 2017-18

SAVE THE DATE!

SPE February Technical Meeting

February 6, 2018

Holiday Inn Superdome • New Orleans, Louisiana

BSEE High Pressure, High Temperature Regulations and the HPHT Approval Process

Speaker: Richard James

Technical Advisor for Regional Field Operations, BSEE Gulf of Mexico Region

As operators are pursuing the development of known discoveries in the higher temperature, higher pressure environments of the Deep Water Gulf of Mexico, the need for HP and HT rated equipment is an important issue in the decision making process.

From commitments to potential lease acquisition through to exploration drilling budgets, the uncertainty that discoveries cannot be continued to the development phase due to the current lack of qualified equipment is an important consideration.

How to meet the BSEE HTHP regulation requirements is the topic of this month's presentation.

Details of what is needed to be addressed in the I3P review and what will be expected from BSEE in regards to the equipment qualification process as well as the approved methodology to calculate Maximum Anticipated Surface Pressure and status and predicted timing for the upgraded equipment to meet the regulations are topics for discussion.

2017-2018 SPE Delta Section OFFICERS and BOARD OF DIRECTORS

Section Chairperson	Daniel Durey	Shell
Section Past-Chairperson.....	Angie Gobert.....	BSEE
Program Chairperson - 1st vice chair.....	Howard Duhon.....	GATE
Membership Chairperson - 2nd vice chair	Angie Gobert.....	BSEE
Secretary	Evan Graybill	Chevron
Treasurer	Jaime Villatoro.....	BOEM
Vice Treasurer.....	John Sanford	TAM International
Young Professionals Chairperson	Rebecca Collins	BSEE
Student Chapter Liaison (LSU/Nicholls/FSU)	Caitlin Papso	Shell
Northshore Coordinator	Matt Winters.....	Chevron
Northshore Coordinator	Ryan Smith.....	Chevron
Communications / Internet Chairperson.....	Forna Diphicyl	BSEE
Continuing Education Chairperson	Dan Alonso	Cantium LLC
Scholarship / Career Guidance	Ryan Smith.....	Chevron
Newsletter Contents & Advertising	Nick Judice.....	Hargrove Engineers + Constructors
HSE / Section Director	Michael Waguespack.....	Waldemar S. Nelson
Section Director 2015/2017	Matt Wandstrat	LLOG Exploration
Section Director 2015/2017	Phil Moses	Consultant
Section Director 2015/2017	Lauren Woitha.....	BOEM
Section Director 2016/2018	Henry Shurlds	Onesource Prof Search
Section Director 2016/2018	Jan Catalano.....	ORX
Section Director 2016/2018	Tony Richards.....	Consultant
Section Director 2016/2018	Rivers Fike	Shell
ONE VOICE Chairperson	Jan Catalano.....	ORX
Deepwater Symposium Liasion (Aug 2017).....	Sue Barth	Chevron
Sr. Advisor	Allen Porter	Consultant
Golf Tournament Co-Chairperson.....	Matt Wandstrat	LLOG Exploration
Golf Tournament Co-Chairperson.....	Jerry Simms	LLOG Exploration
Active Past Chairs:	Jan Catalano.....	ORX
	Charlie Mayne	W&T Offshore
	Phil Moses	Consultant
	Tony Richards.....	Consultant
	Matt Wandstrat	LLOG Exploration



Delta Section

Our Mission

To collect, disseminate, and exchange technical knowledge concerning the exploration, development and production of oil and gas resources and related technologies for the public benefit; and to provide opportunities for professionals to enhance their technical and professional competence.



In This Issue:

SPE February Technical Meeting	1
Officers & Board of Directors	2
Mission Statement	2
SPE: On the Horizon.....	3
Save the Date! SPE 2018 Golf Tourney.....	3
Great News!	3
From the Chair	4
December Membership Report.....	5
Core Element and STEM	6
Looking Backward / Looking Forward.....	7
Fueling Victory in WWII	8
Spotlight on Young Professionals	9
SPE's Mentoring Program.....	9
Dues Waiver / Out of Work?	9



from THE CHAIR...



Welcome to 2018!!

I hope you were able to have some time off during the holidays to relax and recharge your batteries. For those of you who remained on duty and kept things running during the holidays, our thanks to you.

January marks the half-way point for the current Delta Board term of service. We are committed to continuing to deliver engaging lectures, social events, networking opportunities and service to the membership and other deserving organizations. This spring the Delta board is looking forward to hosting the Annual Golf Tournament, a continuing education event, awarding SPE scholarships to talented college students, continued support of local STEM functions, and the Deepwater Symposium (summer), all of this in addition to the technical luncheons and Awards Banquet. There is much to look forward to this Spring and Summer. I encourage you to come out and participate in these activities either as a participant or as a volunteer.

A new event is currently being planned between SPE and API Delta. The societies are planning to co-host a Chili & Gumbo Cookoff for scholarships. This event will provide additional funds to both societies in order to either increase the number of scholarships they can award or increase scholarship monetary amounts. More to come on this event in the upcoming newsletters.

I am sure you have kept up with current industry events to include the positive increase and stabilization of WTI & Brent Crude prices into the 50 and 60 dollar range. I also want to bring attention to an editorial by Mr. Donnelly in the

December 2017 *JPT* where he describes plans by many companies to increase staffing levels in 2018. These positive trends and surveys give us hope that true signs of recovery are finally here.

A reminder to all to keep your membership current and to encourage your colleagues who are not currently members to renew or join. It is your involvement and dues that enable the Delta Section to continue to deliver support to the local community and the industry. I also encourage you to sign up and attend the monthly technical luncheons. Come out and meet your industry colleagues, eat a good lunch and learn something new.

Cheers,

Daniel A. Durey

Your 2017-2018 SPE Delta Section Chair



SPE-Delta Membership Report

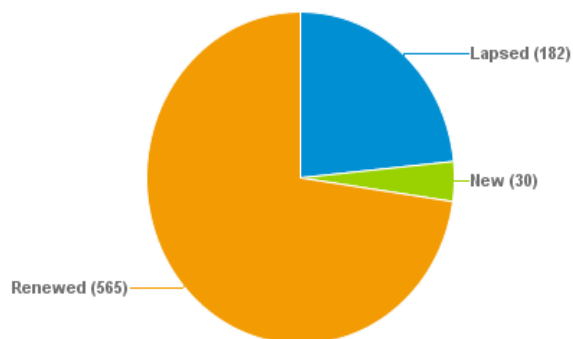
Submitted by Angie Gobert (Membership Chairperson)

As of January 2018

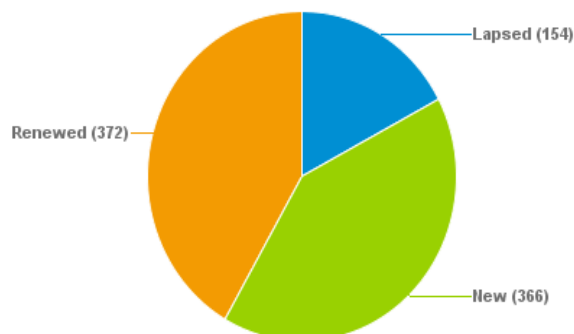


Total Full Members	777
New Members	30
Unpaid Members	182
Total Student Members	892

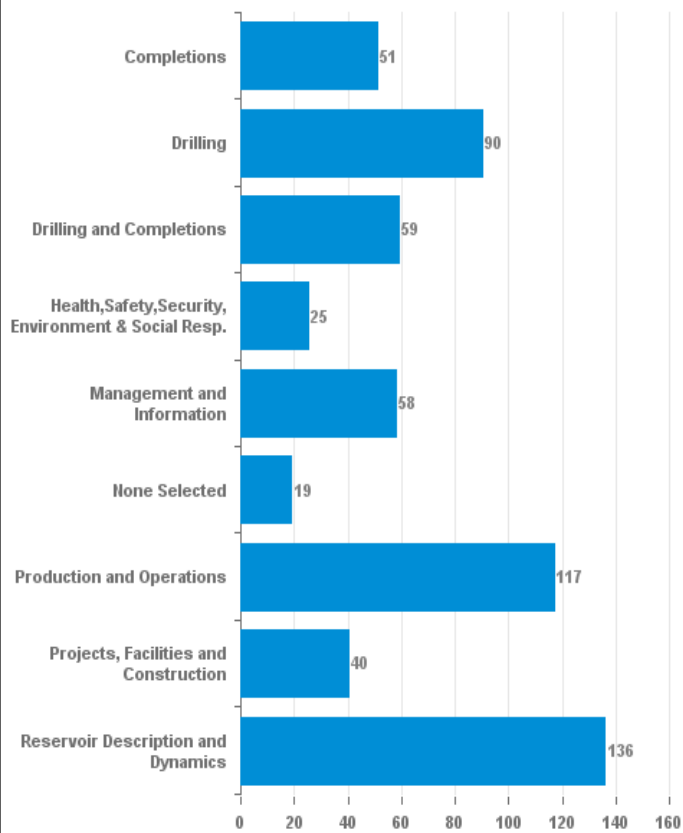
Professional Membership



Student Membership



Current Professional Members by Technical Discipline





Help Core Element Prepare Teachers and Students to Succeed in STEM

Core Element prepares Louisiana students to succeed in STEM by equipping K-12 math and science teachers with the resources, tools, skills, and confidence they need to introduce classroom activities that excite and engage students in the learning process. **Growing students' STEM skills is crucial for our youth to become better prepared to succeed in college and compete in a growing STEM workforce.**



Angela Farnell has attended Core Element's Summer STEM Institute and Hands-On STEM Camps since 2013 and credits Core Element with giving her an edge to help her students succeed in school. Through Core Element, Angela has gained teaching skills and learning activities that create a culture where students are actively involved in the classroom experience, motivated to learn, and have fun.

Angela has been motivated, too. Four years ago, she started a STEM Club and a robotics team. A robotics class has also been added to the school curriculum that allows students to earn high school credit once they complete the course. The success stories continue to grow. Three years ago, Angela and her colleagues launched an annual district-wide Family STEM Night to expose even more students to STEM.

"Robotics increases students' critical thinking and problem-solving skills. In the classroom, it translates to improved grades, confidence, and a curiosity about STEM careers."

— Angela Farnell —

Core Element has inspired, influenced, and enhanced the quality of STEM teaching in Angela's classroom and hundreds of classrooms across South Louisiana.

How can you make a difference in our children's future success in STEM? There are two ways you can help:

- 1. Encourage your child's teachers to attend a free Core Element program.**
- 2. Make a tax-deductible donation online or mail your donation directly to Core Element at P.O. Box 6123, Metairie, LA 70009.**

Your action and gift will further Core Element's mission and ensure that teachers continue to have access to free quality professional development and resources to prepare students to compete in Louisiana's burgeoning STEM workforce.

Thank you for your support!

LOOKING BACKWARD / LOOKING FORWARD

by Allen Porter, PE
SPE Delta Section Senior Advisor

Editor's Note: Last issue Al discussed a brief story of where his journey in the oil industry started and brought us to current day. Today he discusses the transitions he sees coming as well as hope and opportunity for the future.

Forward

One symbol of the end of the “Shelf” was the closing of the McDermott Amelia yard. It was the core of the big “Shelf” fabrication. Those of us that were deeply involved in facilities virtually “lived” in that yard. What happened? The facility was just not big enough nor does Louisiana have the water depths to handle the deep water projects. South Texas does. Why do the detailed engineering in New Orleans when it is a much shorter trip from Houston to the Texas yards? The Shell building is already changing the name to Whitney Bank. Texas has no state income tax. The Texas schools are superior. The crime is less. With all the terrible loss in Houston, think what the storm would have done to New Orleans with the pumps down. New Orleans and much of south Louisiana will remain a service base, but the big engineering projects and the heavy fabrication will not come back. Smaller operators may do projects but they will go the “old” route and depend on the service companies. Some of the majors reinvent the wheel.

Hope

Oklahoma still has an industry that is functioning. Cushing has remained a major oil transportation terminal because of all the storage was available and the pipelines ran through that tankage. Reservoir maintenance and shale has helped. Of course it is scaled way back. Where is the industry on the shelf? This is a general appraisal but most of the present operators bought the production from majors that no longer considered the platforms profitable. Although in some cases, workovers will help but generally these purchasers go in with the plan of cutting expenses on facilities in many fields the majors have already failed to totally keep up their maintenance.

IS THERE OIL LEFT ON THE SHELF? Yes

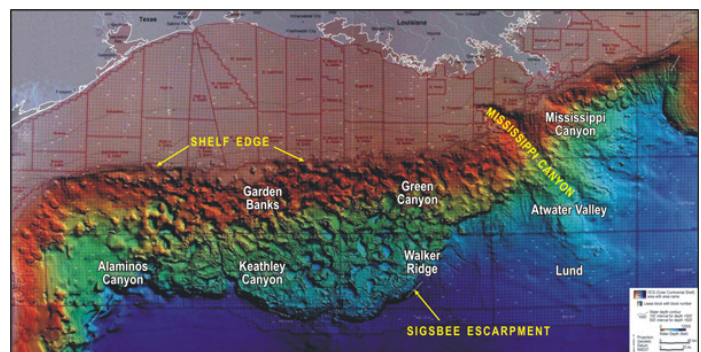
WHY CAN IT NOT BE PRODUCED? Gas lift is inefficient with the amount of water necessary to recover a low percentage of oil.

Some facilities actually have to buy make up gas to lift. Water treating and disposal cost is prohibitively high.

SOLUTION (Fantasy)

- 1) Go to turbines and electric pumps.
- 2) Research the electric pump design with a strong effort to use various methods such as a sump and centrifuge to discharge at least part of the water at the well bottom and let it go back into the bottom of the zone. There is hope of leaving at least a good part of the water in the wellbore. As an example, assume a well makes 85% water and produces 100 barrels of oil per day. That mean lifting 666 barrels of liquid a day to get 100 barrels of oil. If half the water is left in the hole, only 466 barrels would be lifted. That not only reduces horsepower to lift the well, the injection water pump horsepower and pump size is reduced. Flow is smoother. Only gas originated in the well need be produced. It can be compressed for sale or an extra stage on the pump might take the well all the way to the high pressure separator.

Weight, noise, and efficiency need to be considered. Lots of engineering, many pumps and lots of turbines. A revised shelf.



VOLUNTEERS NEEDED

Fueling Victory in WWII: Production & Use of Oil in WWII

The National WWII Museum in New Orleans is a remarkable place. It contains snippets of oil's role in winning the war, but not much of that story.

Armies, navies, air forces consume vast quantities of resources. Oil - lots of it - was required to make the victory possible.

SPE Delta is launching a study to develop the story of fuel, oil in particular, in winning WWII.

We are looking for volunteers willing to dive-in and research this piece of

history to tell the story of how much was needed, where it came from, how it was found, produced, refined, conserved, transported, and fought over, how it affected military strategy and about the people who made it all happen.

We hope that eventually the story we develop will be presented in the National WWII Museum.

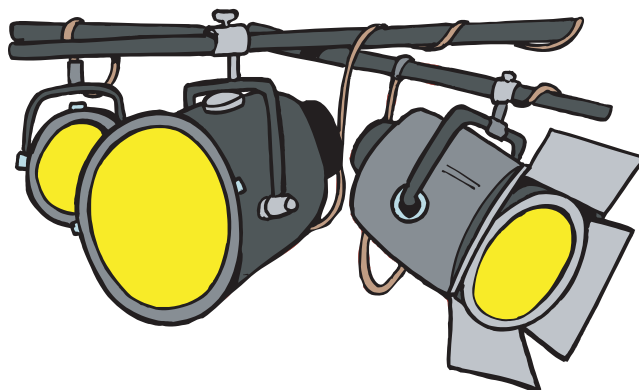
This is likely to be a multi-year effort. Our first goal will likely to be development of a short documentary video.



If you would like to be involved,
please contact **Howard Duhon** at
hduhon@gateinc.com.



Delta Section



Spotlight on Young Professionals

Do you know a young professional who deserves to be put in the Spotlight? If so, suggest them (or yourself) to be featured in the “Spotlight on Young Professionals.” Help us identify worthy young professionals by submitting your story today for a chance to be featured in The Way Ahead™.

Learn more at <http://www.spe.org/members/yps.php>



Volunteering Looks Good on You.

Engage Support Contribute

Become a Mentor through SPE's eMentoring Program

eMentoring gives SPE members a way to contribute to the E&P industry by sharing industry insights and practical career advice with young professionals, or by helping university students with academic and career direction. Young professionals also have the unique opportunity to serve as mentors to students.

Join the program today by going to <http://www.spe.org/ementoring/>

Dues Waiver

SPE offers a dues waiver for renewing members who have lost their jobs due to the industry downturn and other circumstances. To qualify, submit a written request by either postal mail or email to service@spe.org

Out of Work?

Check out the Members in Transition Toolkit at <http://www.spe.org/members/transition/>. Learn how to optimize your job search, develop your network, enhance your skills, and thrive in a downturn.